



GEORGE BARCLAY  
JOHN M. ROBINSON  
LORD SHAUGHNESSY

The Men Who Promoted Summerland

# George N. Barclay

**Who:** He was the son of an English banker.

**When:** He arrived in 1890.

**Where:** He was from Birmingham, England.

**How:** He travelled by steamship across the Atlantic, by train across Canada, and by sternwheeler to Summerland.

**Why:** He established a large ranch for raising cattle and horses.

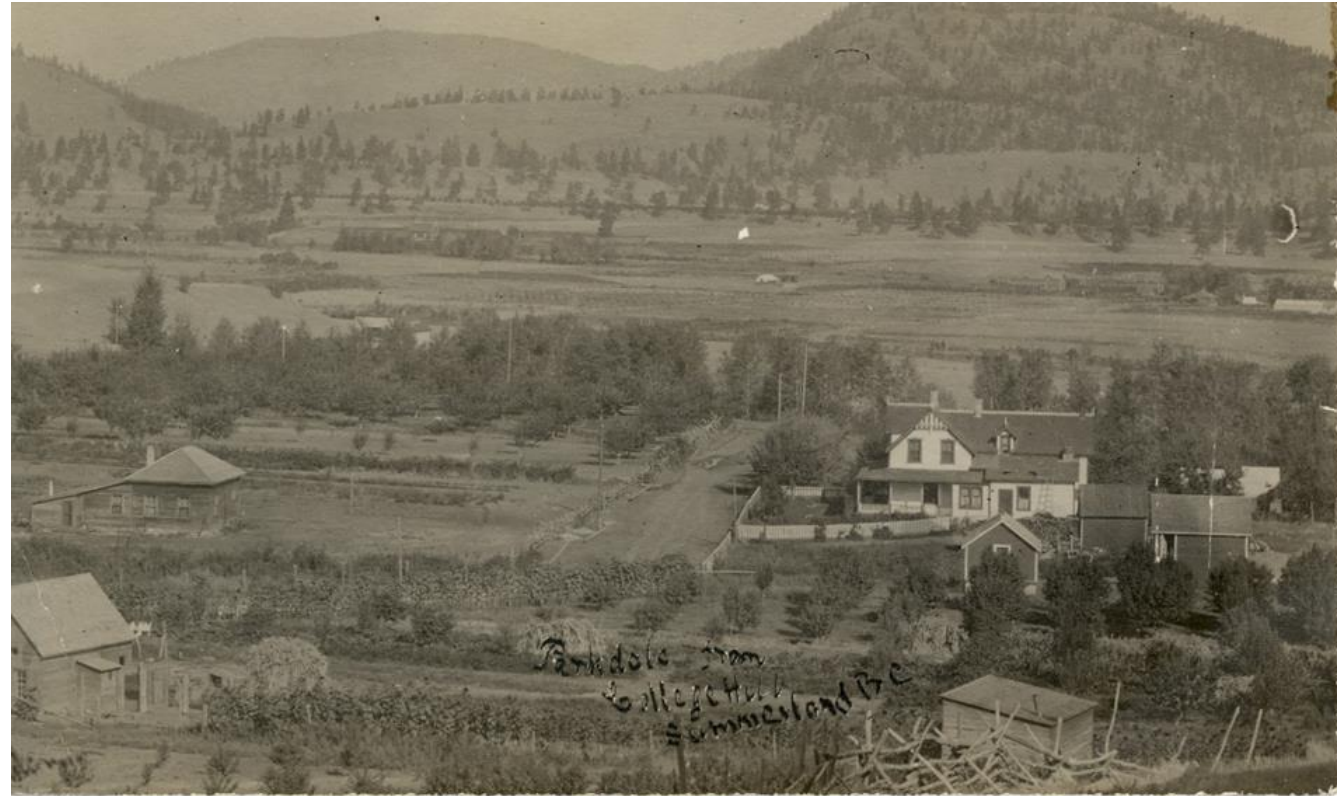
**Land:** In 1903, he bought a very large parcel of land from David-Lloyd Jones for \$25,000.



1890. George Barclay riding his horse on the Barclay Ranch.

# What Did George N. Barclay Do?

- He established a large ranch.
- Set up a training school for “Gentlemen Ranchers”
- Encouraged wealthy young men, called “Remittance Men” (second sons of wealthy men who would not inherit), from the Harrow School in England to come to Summerland and take up ranching
- E.R. (Bob) Faulder, W.R. Deans, Richard R. Turner, Granville Morgan, and Will Fosbery all arrived because of his encouragement.



1908 Barclay house. Looking north towards Garnett Valley and Rattlesnake mountain. The Dale home and the Ritchie home (Barclay house) are in the photo; addressed to Mr. and Mrs. R. Hunter from P. Holder.

# Lord Thomas George Shaughnessy

**Who:** He founded Summerland and was President of the Canadian Pacific Railway.

**Where:** From Montreal, Quebec

**Why:** He wanted to find an area where fruit could be grown for the CPR railway and hotel chain.

**How:** He travelled by train.

**Home:** He built an orchard house in Summerland in 1903.

1916. Portrait of Sir Thomas Shaughnessy



SUMMERLAND MUSEUM & ARCHIVES

# What Did Lord Shaughnessy Do?

- He bought the 3500 acre Barclay Farm.
- Convinced wealthy friends to buy orchard land in Summerland
- Formed the Summerland Development Company in 1902 to encourage settlers to come to the area
- Financed the irrigation system and began town plan
- Started the “Apple Show” which later became the Fall Fair



1909. Shaughnessy Avenue, the main street of Lower Summerland looking south with business buildings on west side of the street

# John M. Robinson

**Who:** He was the first Reeve of Summerland.

**When:** He arrived in 1902.

**Where:** He was from Brandon, Manitoba.

**Why:** He wanted to prospect for gold west of Peachland.

1900. John Moore Robinson, first Reeve of Summerland.



SUMMERLAND MUSEUM & ARCHIVES

# What Did J.M. Robinson Do?

- He worked for Lord Shaughnessy as Manager of the Summerland Development Company (set up to promote investment in settlers to immigrate here).
- Real Estate Agent
- Established soft fruit industry
- Named Peachland, Summerland, and Naramata
- Responsible for dams being built on headwaters of Trout Creek and a reservoir at the top of Peachland



1908-1909. View of Lower Town and Smith Wharf; top left corner is J.M. Robinson's house.

## Sources:

Okanagan Historical Society. (1956). The twentieth report of the Okanagan Historical Society 1956 [P]. doi:<http://dx.doi.org/10.14288/1.0132205>

“Summerland in the Beginning and Pioneers Before 1905.” Summerland Museum Archivist Group, 1984

Okanagan Historical Society. (1996). Okanagan history. Sixtieth report of the Okanagan Historical Society [P]. doi:<http://dx.doi.org/10.14288/1.0132239>

“Summerland: In Celebration of 100 Years.” Summerland Museum and Heritage Society, 2006.

Okanagan Historical Society. (1956). The twentieth report of the Okanagan Historical Society 1956 [P]. doi:<http://dx.doi.org/10.14288/1.013220>

Okanagan Historical Society. (1956). The twentieth report of the Okanagan Historical Society 1956 [P]. doi:<http://dx.doi.org/10.14288/1.013220>

“The Streets of Summerland: Origins and Locations.” compiled by F.C. Storey. nd.

Summerland Museum Photo Archives: 1985-177-002, 1978-139-010, 1971-104-001, 1978-081-001, 2001-001-001, 1979-312-006